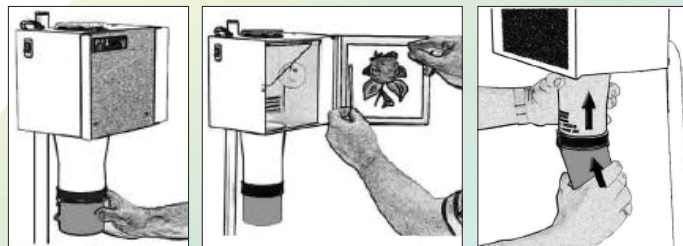


Cake Decorating Projector



KOP302XK
Kopyrite Projector with Base

- ☀ Easy to set up and operate.
- ☀ Original image can be enlarged up to 300% vertically or 2500% horizontally or reduced to 70%.
- ☀ High quality projected images - sharp and clear!
- ☀ Internal cooling fan to protect image from damage after long hours heating.



GETTING STARTED

1. Open the door of your projector. Screw in Lamp. Remove protective film from mirror - Do not touch the mirror surface.
2. Place your image (max 6"x6") under the spring clips.
3. Close the door, connect the projector to grounded electrical outlet and turn on. Your image will appear on your work surface.
4. Loosen the Thumbscrew Lock Knob to raise or lower your projector until the desired SIZE of image is projected.
5. Once satisfied with the size of your image, FOCUS by moving the lens UP and DOWN inside the lens barrel.
6. If you have purchase a Reduction Lens (KOPRD300) then attach this over the Glass End of the lens when reducing.



Vertical Projection

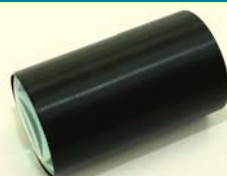
SPECIFICATION	Max. Image Size	6" x 6" (15 x 15 cm)
	Lens	200mm F/3
	Illumination	250W
	Power	110-120V / 60Hz
	Projection Range	70% to 300% vertically 70% to 2500% horizontally
	Cooling Fan	40CFM
	Weight	7.5kg

ACCESSORIES & SPARE PARTS



Gives a bright and clear image during projection.

KOPL0004
Photolamp (250W)



Standard lens, for image enlargement or reduction.

KOPLA001
Lens Assembly



Attach to lens assembly for further 50% image reduction.

KOPRD300
Reduction Lens



Connect lens assembly to projector head.

KOPPC003
Lens Collar



To hold projector on the table.

KOPSN003
Thumb Screw Lock Knob